



**OBI Livestock Ltd. Presents
2nd ANNUAL**

**FROZEN
GENETICS
on**

ICE

ONLINE SALE

**Sale Starts on Tuesday December 28 at 9:00 AM
Sale Ends on Wednesday December 29 at 7:00 PM
Horseshoe Style**

OBI LIVESTOCK LTD. WELCOME



I welcome you all to the 2ND Annual OBI Livestock Ltd. Frozen Genetics On Ice Sale.

I have been striving for genetics that will enhance both the Black and Red Angus breeds by gathering semen from a lot of walking bulls that will evolve your herds. As well as very sought after A.I. bulls that make those front-end pasture cows. The offering contains very unique genetics that will take your program to that next level. Check out the very rare semen in this book as well, some you won't believe are around yet.

Embryos on offer as well are from the top end programs from across the land; outcross and popular pedigrees with huge marketability. Not very often do you get the chance to obtain such genetics. Some old and proven ones are also on offer as well. These also need some serious consideration. So many options available.

I am very proud of this offering and want to thank all the consignors for the consideration to allow myself and my team to market their program in this special event. Give me a call or any of the members of the sale team or even better call the consignors, they all want to visit after the holidays.



Happy Holidays to all,
Mark Holowaychuk
OBI Livestock Ltd.



SALE DAY INFORMATION

Sale Day Phones

Mark Holowaychuk, OBI (403)896-4990
Roger Peters, OBI (403)828-9815
Kurt Pedersen, OBI (780)209-9999
Jesse Emery, OBI (780)284-3490
Ryan Hurlburt, Consultant (306)292-9812
Mark Shologan, DLMS (780)699-5082

OBI Livestock Ltd.

28 Glendale BVLD

Red Deer, Ab. T4P 2P3

Email: o.b.i@shaw.ca

Website: www.cattlemanagement.ca

EMBRYO GUARANTEES

Guaranteeing 90 day pregnancies if done by an accredited veterinarian.
3 EMBRYOS – GUARANTEEING 1 PREGNANCY
4 OR 5 EMBRYOS – GUARANTEEING 2 PREGNANCIES
All semen & Embryos are Canadian Qualified unless stated in the Lot.

SHIPPING

All transfer of embryos/semen and paperwork is between the buyer and seller.
Shipping costs are the responsibility of the purchaser.

TERMS & CONDITIONS

Sale will be conducted under the Canadian Angus Association Terms & Conditions.

U.S. EXCHANGE RATE

Will be announced prior to the sale.

ONLINE BIDDING

Sale Starts on Tuesday December 28 at 9:00 AM
Sale Ends on Wednesday December 29 at 7:00 PM
DLMS FARM GATE TIMED AUCTION

The OBI Livestock Ltd. Frozen Genetic On Ice Sale will be conducted with DLMS and their Farmgate with a timed Racehorse Style Time Sale. For any assistance contact Mark Shologan or refer to Back Inside Cover.



2022 OBI Livestock Ltd. Frozen Genetics On Ice Sale Consignors

HAMILTON FARMS – ROB & GAIL HAMILTON & FAMILY (403)540-3186 LOTS 1,2,3,7
SIX MILE ANGUS – CLAYTON & CORRINE GIBSON, TYSON & CALLIE HERTZ (306)640-7970 LOT 2
BAR-E-L ANGUS – DAVID & LYNNE LONGSHORE (403)740-6788 LOTS 3,4,5,29,30
BAR-H LAND & CATTLE – ROBIN HOGBERG (306)743-2840 LOT 4
COWTRAX CATTLE CO. – COLT KORNFIELD (306)298-7745 LOT 3,20,30,31,34,35
DURALTA FARMS INC. – DAVE DURIE (780)208-4888 LOT 5
PIESCHEL FARMS – DEVON & RAE-LEE ERICKSON (403)586-4047 LOT 9
CHAPMAN CATTLE CO. – SILAS CHAPMAN (403)741-2099 LOTS 6,10
TINY ANGUS RANCH – RYAN NIELSEN (306)532-3201 LOT 8
CRESCENT CREEK ANGUS – WES & KIM OLYNYK WADE OLYNYK (306)728-8284 LOT 8
WINDY WILLOW FARMS – MICHELLE POTAPINSKI (306)677-7540 LOT 11
ALLANDALE ANGUS – WAYNE STETSON (780)853-7523 LOT 11
LYNDEN MANOR FARM – GLEN SMITH (416)526-5428 LOTS 13,14,15,36,37
LLB ANGUS FARMS LTD. – LEE & LAURA BROWN (403)740-9429 LOT 15W
OUTLAW COULEE RANCH – CORRIE & CHRISSY RICHARDSON (306)295-7379 LOTS 16,17,18,19
SAND CREEK ANGUS – BEN DUMONTEL (306)296-7736 LOTS 23,24,25
WILBAR CATTLE CO. – BRYAN & TRACEY WILLMS (306)492-7504 LOTS 26,27,28,40,59,60,61,62,63,64
POPLAR MEADOWS ANGUS – MONTY & TANYA BELSHAM (250)845-8474 LOT 31
PINE ISLAND ANGUS – LEAH ALLEN (780)205-5591 LOT 32
CASH CATTLE CO. – NOLAN CASH (403)548-9651 LOT 33
TRIPLE L LIVESTOCK – RANDY TETZLAFF (306)231-6969 LOTS 22,49,71
HR HAHN CATTLE CO. – BOB HAHN & RYAN WEISS (780)991-9526 LOTS 21,50,51,52,53,54,55
OBI LIVESTOCK LTD. – MARK HOLOWAYCHUK (403)896-4990 LOTS 12,39,46,47,56
SUNBERRY VALLEY RANCH – DARREN VANCUREN (403)638-4142 LOTS 38,46,57,58
U2 QUALITY SEEDSTOCK – COLE UNGER (587)370-3700 LOT 38
YARROW CREEK RANCH – DENNIS LASTUKA (403)315-2614 LOT 41
RSL RED ANGUS – ROBERT LAYCOCK (306)441-5010 LOTS 42,44
WRIGHT LIVESTOCK – JIM WRIGHT (306)304-7711 LOT 43
MOOSE CREEK RED ANGUS – DARREN IPPOLITTO (306)577-8970 LOT 43
REDRICH FARMS – BILL & TRACY DIETRICH & FAMILY TY & SHANIA DIETRICH (780)608-7173 LOT 44
LAURON RED ANGUS – LAURIE HUNTER (403)994-1686 LOT 45
TRADEMARK GENETICS – MANDY FISCHER (713)204-7525 LOT 47
ARNTZEN ANGUS – DEAN ARNTZEN (780)385-0567 LOT 48
BRYLOR RANCH – BRYAN & SHERRY MACKENZIE (403)627-8266 LOTS 65,66,67
GOAD FAMILY ANGUS – COLE GOAD (780)853-0273 LOT 68
HAWKEYE RANCHING CO. LTD. – LEIF BROST (403)928-5893 LOT 69
B-ELLE RED ANGUS – GLEN & EVELYN BLOOM JEFF & KHIYA BLOOM (306)845-7601 LOT 70
PATCHELL LIVESTOCK – BRUCE & BRENDA PATCHELL (226)820-0899 LOTS 72,73

Lot 1 PICK OF THE HAMILTON FARMS 2023 BRED HEIFERS

Here we are this year offering you the "Pick" of our 2023 bred heifer "Replacement Pen"! We are very excited about this offering, as we feel the quality in this upcoming group of bred heifers will be outstanding and second to none!! Sire groups by Showman, Alcatraz, Roper, Atlantis, Profound, Three Rivers, Southern Charm, and more, will be available to choose from and they will be confirmed pregnant by some of the leading calving ease sires in the industry. Many HF bred females have been doing an outstanding job for other leading Angus operations like Poplar Meadows, Bar EL, W Sunrise, Heinz Cattle, with many of their high selling bulls and females born from Hamilton Farms females. We strive to raise functional females with ideal udders and lasting production and this will be a great opportunity to select from the best we have. This heifer selection will take place on or around the 1st of September after the pregnancy testing is done.

PICK OF HERD



HF ROSEBUD 121J
Sold in Agribition 2022 for \$37,000 to Rideau Farms/Knutson



HF TIBBIE 21J
Collection 2022



HF LUCY 54J
Collection 2022



HF TIBBIE 3H
Pieschel Farms-\$22,000



HF ANNIE K 40H
Big Iron Ranch-\$50,000



HF BLACKBIRD 50G
Riverfront Angus-\$19,000



HF TIBBIE 86G
3G Cattle Ventures-\$22,000



HF TIBBIE 201F
Ter-Ron Farms-\$20,000



HF MISTY'S VALENTINE 99F
Grand River Angus-\$15,000

HAMILTON FARMS & SIX MILE ANGUS



HF SHOWTIME 78H
\$80,000 to Allandale Angus & Double F Cattle Co.



HF SOLD OUT 179J
\$40,000 to Compass Ranch & Remital Farms



HF SHOWCASE 176J
\$40,000 to Ranch Covey Hill & Mac Angus

Lot 2 SCHIEFELBEIN SHOWMAN 338

JMB TRACTION 292

S A V RENOWN 3439

S SCHIEFELBEIN ATTRACTIVE 4565

D FROSTY ELBA 3745

FROSTY ANSWER 3979

FROSTY UPWARD 1100

EPDS	BW	WW	YW	MILK	CE
0.0	84	160	32	8.0	

**LOTS 2A TO 2J - SELLING 10 PACKS OF 5 STRAWS ♦
FOB: ALTA GENETICS ♦**

The buzz that was initially created around Showman and his progeny has just continued to impress people in the industry. The first semen kicked off in 2020 commanding the unprecedented price of \$1,800/straw, as well as embryos bringing over \$3,000. As we stated previously, Showman is the Real Deal, no smoke and mirrors, and his progeny seem to be following in his footsteps. He is the true definition of a Curve Bender! BW 0.0, WW +84, YW +160. He has proven himself in the sale ring as well, with HF Showtime 78H bringing \$80,000 for 2/3 interest and full possession, going to Double F Cattle Co. and Allandale Angus in 2021. Then in 2022 the lead off bull in the HF sale, HF Show Biz 226J sold to Roy Mac Angus and Daron Priest for \$34,000, as well as other Showman bulls selling to Ranch Covey Hill for \$40,000 and \$34,000, another bull to Compass and Remital for \$40,000, \$26,000 to GrandRiver Angus, and \$21,000 to Mark Daines just to name a few. The consistency of the cattle have been reflected in the prices over the past couple of years, and we don't foresee any changes.

Just added to Showman's achievements is that he sired the Reserve Champion Bull at Agribition 2022, HF Show Biz 226J, owned by Roy Mac Angus and Daron Priest. The amount of semen is limited...don't miss on this opportunity.



HF SHOW BIZ 226J
\$34,000 to Roy Mac Angus & Daron Priest

Frozen Genetics on Ice Online Sale 5

**S
E
M
E
N**



BAR-E-L REDEMPTION 22H



COWTRAX WAR CAMP 64H



HF AFTERSHOCK 22J



BAR-E-L BRAGGIN RIGHTS 129J

Lot 3 HF ALCATRAZ 60F

AVF BREAKOUT 5409

HF TIGER 5T

S MAY-WAY BREAKOUT 1310 D HF MAYFLOWER 191Z

MAY-WAY LADY BANDO 086 HF MAYFLOWER 78P

	BW	WW	YW	MILK	CE
EPDS	0.7	53	101	42	7.0

**LOT 3A TO 3F - SELLING 6 PACKS OF 5 STRAWS ♦
FOB: ALTA GENETICS ♦**

Alcatraz progeny have been in high regard for their tremendous phenotype stamp, their docility, and flawless structure. Alcatraz sold through Hamilton Farms 2019 sale to Bar E-L Angus and Cowtrax Cattle Co. for a Canadian record selling price of \$200,000 for one half interest. Alcatraz set a new standard for the definition of what a fault free bovine should look like. His structure is pretty much flawless, and he is so impressive in every other way. If docility is important to you, he has that. If added muscle expression is your desire, he provides that. He has proven himself as a calving ease sire, and if excellent quality semen is a priority, he'll supply that. Included in Alcatraz's repertoire is the High Selling bull in Hamilton Farms 2022 Sale going to Rivercrest Angus for \$50,000, HF Aftershock 22J. Aftershock was the heaviest yearling bull with an actual WT of 1456 lbs on Jan 10. Pair this performance with the many other great qualities that Alcatraz carries through with foot and leg structure, docility, and calving ease and that a recipe for success!!

Progeny of Alcatraz: BAR-E-L BRAGGIN RIGHTS 129J - LLB ANGUS FOR \$31,000, COWTRAX WAR CAMP 64H - LAMBS ANGUS FOR \$14,000, HF AFTERSHOCK 22J - RIVERCREST ANGUS FOR \$50,000, BAR-E-L REDEMPTION 22H - VALLEYMERE TTT FOR \$21,500.

Frozen Genetics on Ice Online Sale 6

S
E
M
E
N



Lot 4 **BAR-E-L ROYAL MINT 88G**

CONNEALY CAPITALIST 028

LLB REFLECTION 607A

S LD CAPITALIST 316

D HF EVENING TINGE 38C

LD DIXIE ERICA 2053

HF EVENING TINGE 118Z

	BW	WW	YW	MILK	CE
EPDS	1.9	63	113	25	8.0



DAM

LOT 4A TO 4C - SELLING 3 PACKS OF 10 STRAWS ♦

FOB: ALTA GENETICS ♦ CDN QUALIFIED ♦

Royal Mint is a power house! He brings out the very best of the 316 line! Long spines, sound in every way, excellent scrotal-39cm at 12 months! His dam 38C has produced multiple high sellers for our program, \$27,500, \$27,000, \$31,000, \$19,500, plus a \$10,000 heifer! This cow is powerful in her capacity, perfect udder, tremendous foot quality!



S
E
M
E
N

Lot 5 **MERIT INVESTMENT 1054J**

HF SYNDICATE 213Z

BAR S RANGE BOSS 4002

S U-2 COALITION 206C

D MERIT FLORA 6078D

U2 ERELITE 109Z

MERIT FLORA 4120

	BW	WW	YW	MILK	CE
EPDS	2.8	62	105	25	5.0

LOT 5A TO 5F - SELLING 6 PACKS OF 5 STRAWS ♦

LOT 5G TO 5H - SELLING 2 PACKS OF 10 STRAWS ♦

FOB: ALTA GENETICS ♦ USA, AUS, South America Qualified ♦

Merit Investment 1054J was the High Selling Bull at the Merit Bull Sale for \$80,000 in a hotly contested battle. His dam has done so much for the industry already with many top sellers for many folks. Merit Intent 37H to Linden Cattle Co., Merit Renegade 8130F to Everblack Angus, Merit Sam Elliott 9144G (Kept this bull in the Merit Program), Merit Depth Charge 1001J to 66 Ranch Ltd., Merit Incredible 1020J to 66 Ranch Ltd. & Murray Ranches Ltd., DFCC 4565 Jacked 30J to LK Ranches & Madsen Angus. These are just the maternal brothers she has raised the past 3 years. Many females have also made sales or kept in the operations. Her sire, U2 Coalition 206C has done amazing everywhere he has been used. He has had many top end bulls sell as well in the past few years. Investment 1054J is a bull that is a must see in person with all people having the highest remarks when leaving. This special lot was one I was after the day he traded last March.



DAM



Lot 6 U-2 COALITION 206C

CONNEALY CONSENSUS 7229

YOUNG DALE XCLUSIVE 25X

S HF SYNDICATE 213Z

D U2 ERELITE 109Z

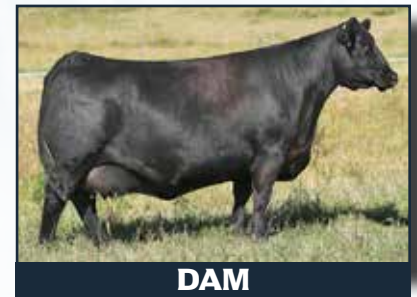
HF MISS BLACKCAP 27R

U-2 ERELITE 1X

	BW	WW	YW	MILK	CE
EPDS	0.8	60	114	27	9.0

LOT 6A TO 6F - SELLING 6 PACKS OF 5 STRAWS ♦
LOT 6G TO 6H - SELLING 2 PACKS OF 10 STRAWS ♦
FOB: BOW VALLEY GENETICS ♦

When I found some semen this fall, I knew this is where the place was to market it. U2 Coalition 206C has sired some of the best bulls calves this past bull sale season. Merit Investment 1054J for \$80,000 to Bar-E-L Angus & Duralta Farms and Greenwood Four Mile 47J for \$60,000 to Ter-Ron Farms. The progeny that 206C has left everyone is at the top of the lists of many. He is sired by HF Syndicate 213Z and from the \$140,000 U2 Erelite 109Z high selling female at the U2 Dispersal Sale. This semen here can and will take your program to the next level.



DAM

S
E
M
E
N



DAM

Lot 7 HF SYNDICATE 213Z

CONNEALY CONSENSUS

TC FREEDOM 104

S CONNEALY CONSENSUS 7229

D HF MISS BLACKCAP 27R

BLUE LILLY OF CONANGA 16

HF MISS BLACKCAP 50N

	BW	WW	YW	MILK	CE
EPDS	-1.4	39	72	28	14.0

LOTS 7A TO 7C - 3 PACKS OF 10 STRAWS ♦

FOB: ALTA GENETICS ♦

Syndicate is a calving ease specialist and has really stood the test of time when you analyse the popularity of his progeny over the past years. He has been used extensively on heifers with much success and virtually zero stress on them or us!! Syndicate combines thickness, stature, and eye appeal, backed by positive EPD's. Syndicate daughters are a very treasured commodity, adding that all important maternal goodness we strive for, with beautiful udder structure and production to match. There are a number of very noteworthy cattle that are sons, daughters, or siblings to the tried and true Syndicate bull. The Coalition bull, a son of Syndicate sold to Spicklers for \$32,000, another full brother (Temptation) sold to Freyburns for \$47,500, and maternal sibs to Syndicate sold in the Masterpiece sale for \$37,500 (HF Swagger) and another maternal sib to Syndicate (HF Lifeline) sold to Grand River for \$35,000. The dam of Syndicate, Miss Blackcap 27R is a matriarch in the Hamilton Farms herd. She is the dam or grand dam of numerous herd bulls going into purebred herds across the country. Syndicate posts true calving ease, Top 3% BW-1.4, Top 10% Milk+28, Top 1% CE+14, Top 6% MCE +12, Top1% Doc +33, Top 10% CBI +326. The consistency and quality of this pedigree is overwhelming, an older and more proven pedigree available for the taking.



HF NEGOTIATOR 280Z - SON
\$28,000 TO LEWIS FARMS



HF TIBBIE 125H - DAUGHTER
\$15,500 TO GRAND RIVER ANGUS



Lot 8 **MC CUMBER TRIBUTE 702**

O C C TREMENDOUS 619T

O C C MISSING LINK 830M

S MC CUMBER TREMENDOUS 2008

D LASSIE 113 OF MC CUMBER

MISS WIX 2022 HC MC CUMBER

LASSIE 935 OF MC CUMBER

	BW	WW	YW	MILK	CE
EPDS	-1.0	56	104	27	11.0

LOT 8A TO 8C - SELLING 3 PACKS OF 5 STRAWS ♦

FOB: CRESCENT CREEK ANGUS, FOB: TINY ANGUS RANCH ♦

Very sought after semen for this bull across the land. He already is his short career sold many top end females for a lot of prominent breeders. Unique genetics that do work.

S
E
M
E
N



Lot 9 PF TJL HENDRIX RLP 8H

LD CAPITALIST 316

ARDA CASH FLOW 63D

S MUSGRAVE 316 STUNNER

D ARDA BLACKCLASS 4F

MCATL BLACKBIRD 831-1378

ARDA BLACKCLASS 27A

	BW	WW	YW	MILK	CE
EPDS	2.4	73	130	29	-2.0

LOT 9A TO 9E - SELLING 5 PACKS OF 10 STRAWS ♦

FOB: ALTA GENETICS ♦

One of the best moving structurally sound bulls to walk across the show ring over the past two years. Hendrix 8H has gotten a lot of attention and given himself a great reputation and has the banners to prove it. He was the 2021 Lloydminster Stockade Roundup Reserve Grand Champion Angus bull, 2022 IPE and Olds Fall Classic Reserve Grand Champion Angus bull. He was just recently Reserve Champion Senior Bull at Agribition. His first crop of calves are built right and have the same docile temperament of their sire. The bull calves have big testicular development and big bodies. The heifer calves are stylish and feminine.



DAM



Lot 10 BC **ROBUST 0807**

BC EAGLE EYE 110-7
S BC SURVEYOR 680D
 BC 2266 PRIDES LASS 4132 680

BC PURE PRIDE 327-8
D BC 327-8 CP BELLE O-807
 BC 607 CP BELLE MF 807

	BW	WW	YW	MILK	CE
EPDS	1.6	64	92	9	4.0

LOT 10A TO 10E - SELLING 5 PACKS OF 10 STRAWS ♦

FOB: BOW VALLEY GENETICS ♦

Unique outcross genetic opportunity! Robust is a power sire that adds an abundance of muscle, length, rib shape and excellent overall structure. A true breeding bull, sons of Robust emulate the same visual appeal of their sire; but more importantly, his daughters now in production are off to a great start and possess the maternal excellence only achieved through decades of genetically predictable breeding. The progeny I have seen this year, makes you want to have more Robust calves in your own herd. We just saw 3 top end Robust bull calves at Agribition.



S
E
M
E
N

Lot TANNAS NATURAL LAW 27F 11

S A V BISMARCK 5682

COLEMAN REGIS 904

S BAR-E-L NATURAL LAW 52Y

D COLEMAN DONNA 1223

BAR-E-L MAGNOLIA 143K

COLEMAN DONNA 801

	BW	WW	YW	MILK	CE
EPDS	0.6	54	99	25	9.0

**LOT 11A TO 11E - SELLING 5 PACKS OF 10 STRAWS ♦
FOB: ALTA GENETICS ♦**

Tannas Natural Law 27F was purchased by Windy Willow Farms & Allandale Angus in the 2021 Tannas ranches Dispersal Sale. He is sired by the very consistent and popular Bar-E-L Natural Law 52Y and his dam is the Donor cow, Coleman Donna 1223. She is the dam of Coleman Donna 6205, the donor dam for Everblack Angus & Allandale Angus and she has done it all for them with many high sellers the past 3 years. This bull is a very good footed bull with extra shape and dimension. A bull that will sire very good progeny. He had a lot of admirers last December.



DAM



MATERNAL SISTER



S
E
M
E
N

Lot PEAK DOT **ATTRACTIVE** 186F 12

JMB TRACTION 292

VISION UNANIMOUS 1418

S SCHIEFELBEIN ATTRACTIVE 6595

D PEAK DOT ERICA 709B

FROSTY ANSWER 3979

ERICA OF PEAK DOT 752Z

	BW	WW	YW	MILK	CE
EPDS	0.0	57	107	23	10.0

LOT 12A TO 12E - SELLING 5 PACKS OF 10 STRAWS ♦

FOB: ALTA GENETICS ♦

Peak Dot Attractive 186F is a bull I have admired for a long time Now. He of course is the sire of the \$90,000 SSS Deuce 2H herdsire for W Sunrise Angus. This bull has also provided Richmond Ranch top sellers to Ter-Ron Farms and Dwajo Angus and many very top commercial 2 year olds. 186F himself is a deep sided bull with extra length and he has one of the best set of feet under him with large hooves. You want to add a foot improver to your herd with some very good history, look no further.



SON
SSS DEUCE 2H



S
E
M
E
N

Lot 13 EXAR STOCK FUND 9097B

BASIN PAYWEIGHT 1682

G A R PROPHET K243

S DEER VALLEY GROWTH FUND

D EXAR EMPRESS 0875

DEER VALLEY RITA 36113

EXAR EMPRESS 2622

	BW	WW	YW	MILK	CE
EPDS	0.5	92	171	28	8.0

LOT 13 - SELLING 1 PACKAGE OF 5 STRAWS ♦

FOB: BOUCHARD LIVESTOCK INT. ♦

This is the only way to obtain this semen, Lynden Manor Farms is the only person in Canada with the semen. He is a high numbered bull ranking in the Top 1% for WW, YW, Carcass Weight & REA. Top 3% for CBI. Stock Fund was a sale day favorite and already has a huge track record for progeny in the USA. Get on this early cause their semen is only selling in this sale this year.

LYNDEN MANOR FARMS



Lot 14 BALDRIDGE ALTERNATIVE E125

POSS TOTAL IMPACT 745
S POSS EASY IMPACT 0119
 POSS ELMARETTA 736
 HOOVER DAM
D BALDRIDGE BLACKBIRD A030
 BALDRIDGE BLACKBIRD X89

	BW	WW	YW	MILK	CE
EPDS	1.2	67	122	13	12.0

LOT 14 - SELLING 1 PACK OF 5 STRAWS ♦
FOB: BOW VALLEY GENETICS ♦

LYNDEN MANOR FARMS & LLB ANGUS FARMS LTD.



Lot 15 WHITESTONE 19 MILLION

BASIN PAYWEIGHT 1682
S DEER VALLEY GROWTH FUND
 DEER VALLEY RITA 36113
 G A R EXALTATION 3144
D B&B ERICA 605
 B&B ERICA 4064

	BW	WW	YW	MILK	CE
EPDS	0.7	65	122	30	8.0

LOT 15 - SELLING 1 PACK OF 5 STRAWS ♦
FOB: ALTA GENETICS ♦

OUTLAW COULEE CATTLE CO.



Lot 16 S CHISUM 6175

PAWS UP ALLIANCE 9561
S S ALLIANCE 3313
 PAWS UP 9048 EMULATION EXT
 S ECLIPSE 169
D S GLORIA 464
 S GLORIA 209

	BW	WW	YW	MILK	CE
EPDS	3.0	65	110	21	3.0

LOT 16 - SELLING 1 PACK OF 5 STRAWS ♦
FOB: OUTLAW COULEE CATTLE CO. ♦

**S
E
M
E
N**

OUTLAW COULEE CATTLE CO.



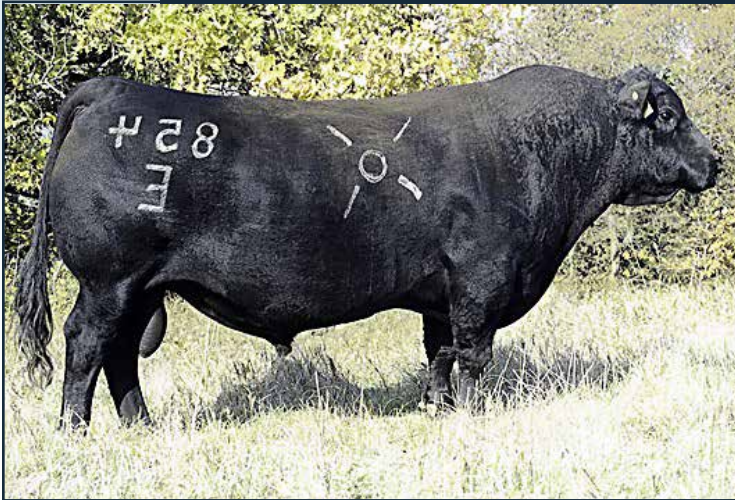
Lot 17 DHD TRAVELER 6807

BAND 234 OF IDEAL 3163
S Q A S TRAVELER 23-4
 Q A S BLACKBIRD EVE 6011
 PBC 707 1M F0203
D BEMINDFUL MAID D H D 0807
 BEMINDFUL MAID OF R R 1079

	BW	WW	YW	MILK	CE
EPDS	0.6	30	62	19	9.0

LOT 17 - SELLING 1 PACK OF 5 STRAWS ♦
FOB: OUTLAW COULEE CATTLE CO. ♦

OUTLAW COULEE CATTLE CO.



Lot 18 OCC EMBLAZON 854E

Q A S TRAVELER 23-4
S D H D TRAVELER 6807
 BEMINDFUL MAID D H D 0807
 PBC 707 1M F0203
D DIXIE ERICA OF C H 1019
 DIXIE ERICA OF C H 615

	BW	WW	YW	MILK	CE
EPDS	0.3	43	69	16	12.0

LOT 18 - SELLING 1 PACK OF 5 STRAWS ♦
FOB: OUTLAW COULEE CATTLE CO. ♦

OUTLAW COULEE CATTLE CO.



Lot 19 COLEMAN KNIGHT 209

RITO N BAR
S R R RITO 707
 ERISKAY OF ROLLIN ROCK 3
 CONNEALY ONWARD
D COLEMAN DONNA 714
 COLEMAN DONNA 386

	BW	WW	YW	MILK	CE
EPDS	0.8	38	56	15	5.0

LOT 19A & 19B -
SELLING 2 PACKAGES OF 5 STRAWS ♦
FOB: OUTLAW COULEE CATTLE CO. ♦

**S
E
M
E
N**

COWTRAX CATTLE CO.



Lot 20 SAV FINAL ANSWER 0035

G D A R TRAVELER 71
S SITZ TRAVELER 8180
 SITZ EVERELDA ENTENSE 1137
 BON VIEW BANDO 598
D SAV EMULOUS 8145
 S A V SKY EMULOUS 2124

	BW	WW	YW	MILK	CE
EPDS	-1.3	55	94	23	13.0

**LOT 20A & 20B -
 SELLING 2 PACKAGES OF 10 STRAWS ♦
 FOB: COWTRAX CATTLE CO. ♦**

HR HAHN CATTLE CO.



Lot 21 SAV ADAPTOR 2213

PARAMONT AMBUSH 2172
S B C C BUSHWACKER 41-93
 R C ANITA T BANDO 918903
 SCHOENES FIX IT 826
D SAV ABIGALE 0451
 S A V ABIGALE 6062

	BW	WW	YW	MILK	CE
EPDS	2.8	53	87	24	-2.0

**LOT 21 - SELLING 1 PACK OF 7 STRAWS ♦
 FOB: HR HAHN CATTLE CO. ♦**

**S
E
M
E
N**

TRIPLE L LIVESTOCK



Lot 22 SITZ UPWARD 307R

CONNEALY LEAD ON
S CONNEALY ONWARD
 ALTUNE OF CONANGA 6104
 SITZ VALUE 7097
D SITZ HENRIETTA PRIDE 81M
 SITZ HENRIETTA PRIDE 1370

	BW	WW	YW	MILK	CE
EPDS	2.3	65	124	34	8.0

**LOT 22A & 22B -
 SELLING 2 PACKAGES OF 5 STRAWS ♦
 FOB: TRIPLE L LIVESTOCK ♦**

SAND CREEK ANGUS



Lot 23 ELLINGSON THREE RIVERS 8062

CTS REMEDY 1T01

S ELLINGSON HOMESTEAD 6030

EA ERICA 1082

ELLINGSON CHAPS 4095

D EA EMBLYNETTE 6279

EA EMBLYNETTE 2159

	BW	WW	YW	MILK	CE
EPDS	5.9	109	200	18	-9.0

**LOT 23 - SELLING 1 PACK OF 10 STRAWS ♦
FOB: SAND CREEK ANGUS ♦**

SAND CREEK ANGUS



Lot 24 HA PRIME CUT 4493

TC FRANKLIN 619

S VERMILION SIRLOIN

VERMILION LASS 8482

HA PROGRAM 5652

D HA MISS BLACKCAP 9127

H A MISS BLACKCAP 1250

	BW	WW	YW	MILK	CE
EPDS	2.0	74	125	24	8.0

**LOT 24 - SELLING 1 PACK OF 10 STRAWS ♦
FOB: SAND CREEK ANGUS ♦**

SAND CREEK ANGUS



OUT OF SALE

Lot 25 KG JUSTIFIED 3023

CONNEALY CONSENSUS 7229

S CONNEALY JUDGMENT

ENTRINE OF CONANGA 9876

SITZ WISDOM 481T

D KG MISS MAGIC 1443

KG MISS MAGIC 3528

	BW	WW	YW	MILK	CE
EPDS	-2.0	62	109	29	11.0

**LOT 25 - SELLING 1 PACK OF 10 STRAWS ♦
FOB: SAND CREEK ANGUS ♦**

**E
M
B
R
Y
O
S**

WILBAR CATTLE CO.



Lot 26 SAV NET WORTH 4200

SITZ TRAVELER 8180
S SAV 8180 TRAVELER 004
 BOYD FOREVER LADY 8003
 SA F 598 BANDO 5175
D SAV MAY 2410
 SAV MAY 6269

	BW	WW	YW	MILK	CE
EPDS	4.3	53	100	28	2.0

LOT 26 - SELLING 1 PACK OF 5 STRAWS ♦
FOB: BOW VALLEY GENETICS ♦

WILBAR CATTLE CO.



Lot 27 OCC LEGACY 839L

D H D TRAVELER 6807
S OCC ECHELON 857E
 DIXIE ERICA OF C H 1019
 O C C ANCHOR 771A
D OCC DIXIE ERICA 960E
 DIXIE ERICA OF R R 4345

	BW	WW	YW	MILK	CE
EPDS	1.1	30	58	22	9.0

LOT 27 - SELLING 1 PACK OF 5 STRAWS ♦
FOB: BOW VALLEY GENETICS ♦

**E
M
B
R
Y
O
S**

WILBAR CATTLE CO.

Lot 28 GDAR TRAVELER 71

Q A S TRAVELER 23-4
S TRAVELER 1148 G D A R
 BLACKCAP FOREVER 485 G D A R
 LAVANA 355 G D A R
D G D A R MISS BLACKCAP 567
 BLACKCAP LADY 384 G D A R

	BW	WW	YW	MILK	CE
EPDS	-1.3	21	39	38	9.0

LOT 28 - SELLING 1 PACK OF 2 STRAWS ♦
FOB: BOW VALLEY GENETICS ♦

BAR-E-L ANGUS



SIRE OF EMBRYOS - BC ROBUST 0807

**E
M
B
R
Y
O
S**

**Lot
29**

**BAR-E-L BLACKCAP 113F X
BC ROBUST 0807**

BC SURVEYOR 680D

BROOKING REAL ESTATE 6072

S BC ROBUST 0807

D BAR-E-L BLACKCAP 113F

BC 327-8 CP BELLE O-807

BAR-E-L BLACKCAP 27D

PE	BW	WW	YW	MILK	CE
EPDS	2.5	60	95	28	0.5

LOT 29 - SELLING 1 PACKAGE OF 5 IVF EMBRYOS ♦

FOB: BOVA TECH ♦ CDN USA AUS QUALIFIED. ♦

113F is ideal in size, volume and muscle shape. Deep bodied, sound footed and does it all with an attractive appealing look. Production is bred into this cow family, the 113F progeny have moved to the top of the leader board! The grand dam Bar-E -L Blackcap 4X continues to produce, with past herd sires Bar-E-L All Star 7A and more recently, second high selling bull last spring at 26,500! This mating with BC Robust 0807 is ideal! His progeny are just starting to catch fire!



SIRE OF EMBRYOS -
SITZ RESILIENT 10208

Lot 30 **BLAIR'S MADAME PRIDE 306H**
SITZ RESILIENT 10208

SITZ STELLAR 726D
S SITZ RESILIENT 10208
SITZ MISS BURGESS 1856

DUFF NAPOLEON 232
D BLAIR'S MADAME PRIDE 306H
S A V MADAME PRIDE 0151

PE	BW	WW	YW	MILK	CE
EPDS	1.0	66	113	22	7.3

LOT 30A - SELLING 1 PACKAGE OF 3 IVF EMBRYOS ♦

FOB: BOVA-TECH - CDN USA AUS QUALIFIED ♦

LOT 30B - SELLING 1 PACKAGE OF 3 IVF EMBRYOS ♦

FOB: BOVA-TECH - CDN USA AUS QUALIFIED ♦

Blairs Madam Pride 306H- comes from the the legendary SAV Madam Pride family, 306H is full of capacity and goodness, great feat, excellent milk flow and combines some of the best Angus has to offer. She is infact a maternal sister to SAV Renovation. This genetic combination with Sitz Resilient definitely makes this llot so intriguing to say the least!

**E
M
B
R
Y
O
S**



SIRE OF EMBRYOS
BC ROBUST 0807

Lot 31

MERIT SOCIALITE 7163E
BC ROBUST 0807



BC SURVEYOR 680D

BAR S RANGE BOSS 4002

S BC ROBUST 0807

D MERIT SOCIALITE 7163E

BC 327-8 CP BELLE O-807

MERIT SOCIALITE 3060

PE	BW	WW	YW	MILK	CE
EPDS	2.5	54	85	17	2.0

**LOT 31 - SELLING 1 PACKAGE OF 3 EMBRYOS ♦
FOB: BOW VALLEY GENETICS ♦ CDN, USA, AUS QUALIFIED ♦**

At the building a legacy sale I purchased pick of the Merit heifer calves and chose "Sassy". She was the Junior Gold Show Champion in 2018. She was a crowd and judge favourite throughout her show career. We sold a 1/2 interest in her to Colt Kornfeld of Cowtrax Cattle Co. In our 2019 sale. The sire of these embryos has become a much sought after bull with progeny topping sales and shows on both sides of the border.



MERIT SOCIALITE 7163E

EMBRYOS



LEAH 21J - DAUGHTER

Lot 32 **RRD TIBBIE 18Y**

S A V HEAVY HITTER 6347

D RRD TIBBIE 18Y

RRD TIBBIE 81R

**LOT 32A - SELLING 1 PACKAGE OF 3 EMBRYOS Sired BY SAV RENOVATION 6822 x RRD TIBBIE 18Y ♦
 FOB: SUNDOWN LIVESTOCK TRANSPLANTS ♦
 CAN, USA, AUS, SOUTH AMERICA QUALIFIED ♦**

PE	BW	WW	YW	MILK	CE
EPDS	2.2	59	108	22	0.5

**LOT 32B - SELLING 1 PACKAGE OF 3 EMBRYOS Sired BY SAV SUPERCHARGER 6813 x RRD TIBBIE 18Y ♦
 FOB: SUNDOWN LIVESTOCK TRANSPLANTS ♦
 CAN, USA, AUS, SOUTH AMERICA QUALIFIED ♦**

PE	BW	WW	YW	MILK	CE
EPDS	2.2	54	99	23	-0.5



SIRE OF LOT 32A EMBRYOS
 SAV RENOVATION 6822



SIRE OF LOT 32B EMBRYOS
 SAV SUPERCHARGER 6813

RRD Tibbie 18Y is a truly powerful individual who I acquired from my dad a few years ago. Every year he AI's his best cows to raise bulls for use in his own herd and she had been headlining that program since she was a two year old. I guess dad finally got tired of me badgering him every spring when we AI'ed about how she really should be a donor cow and he gave me the opportunity to own her! Phenotypically she is nearly perfect! She is great on the move and at nearly 13 years of age she still has a fabulous udder. We already have a couple daughters out of her flush to Renovation that we absolutely love! They will be in production early 2023. They are stylish, easy fleshing, great footed and are laying down what look to be very neat udders. Her mating to the now deceased SAV Supercharger has me really excited. He is a bull who I think will compliment her very well with his tremendous muscle expression and awesome phenotype.



LEAH 10K - DAUGHTER

E
M
B
R
Y
O
S



SIRE OF EMBRYOS
SAV PRESIDENT 6847

Embryos
Lot 33

U-2 ANNIE 175A
SAV PRESIDENT 6847



COLEMAN CHARLO 0256

YOUNG DALE XCLUSIVE 25X

S SAV PRESIDENT 6847

D U-2 ANNIE 175A

S A V BLACKCAP MAY 4136

U-2 ANNIE 161X

PE	BW	WW	YW	MILK	CE
EPDS	3.9	59	103	19	1.0

LOT 33A - SELLING 1 PACKAGE OF 3 EMBRYOS ♦

FOB: BOW VALLEY GENETICS ♦

LOT 33B - SELLING 1 PACKAGE OF 3 EMBRYOS ♦

FOB: BOW VALLEY GENETICS ♦

Annie 175A is a cow we purchased in the historic U2 dispersal. We appreciated her strong foot and udder structure along with her gentle disposition and capacity of body. She blessed us with a gorgeous SAV President heifer that first year and after calving that daughter out this spring we knew we needed more. When we flushed her back that same way this spring, she surprised us with 28 embryos off that flush! We put some in fresh that day and still have a pile left over so we decided to share some. This mating has already been proven to work and we are excited for the resulting progeny!



SIRE OF EMBRYOS - MASTERMIND 98H

Lot 34 COWTRAX BLACK BELLE 64B X HF MASTERMIND 98H

SCHIEFELBEIN SHOWMAN 338

CIRCLE 7 PIONEER 55Z

S HF MASTERMIND 98H

D COWTRAX BLACK BELLE 64B

HF TIBBIE 14D

SWITZ BLACK BELLE 20Y

PE	BW	WW	YW	MILK	CE
EPDS	1.6	56	98	22	6.0



DAM



COWTRAX WAR CAMP 64H
SON OF BLACK BELLE 64B

LOT 34 - SELLING 1 PACKAGE OF 3 EMBRYOS ♦

FOB: FOB: DAVIS RAIRDAN - CDN AND USA QUALIFIED ♦

Cowtrax Black Belle 64B is a second generation donor and daughter of the best female on our ranch Black Belle 20Y. 64B is wide topped, extremely deep, hairy, with a square udder & plenty of milk. Her son Cowtrax War Camp 64H was the high selling bull in the 2021 Grasslands Angus Bull Sale for \$14,000 to Lambs Quarters Angus. Her maternal brothers have averaged \$10,000 and we will calve 7 maternal sisters, talk about high quality production! The sire HF Mastermind 98H was our favorite of the first Schiefelbein Showman 338 sons mainly because of the cows he came from. His dam, HF Tibbie 14D is absolutely massive and perfect uddered, his grand dam is one of 3 flush sisters who rank near the very top of the Hamilton herd and great grand dam HF Tibbie 100M was the Farmfair & Agribition Supreme Champion. Maternal greatness ready to come to fruition with these embryos!

E
M
B
R
Y
O
S



SIRE OF EMBRYOS
ELLINGSON PROFOUND 8155

**Lot
35**

GLENNIE M'BROOK LASS 8F
ELLINGSON PROFOUND 8155



S POWERPOINT WS 5503

WIWA CREEK MONARCH 53'08

S **ELLINGSON PROFOUND 8155**

D **GLENNIE M'BROOK LASS 8F**

EA ROSETTA 6157

GLENNIE M'BROOK LASS 3A

PE	BW	WW	YW	MILK	CE
EPDS	2.4	55	86	14	5.0

LOT 35 - SELLING 1 PACKAGE OF 3 EMBRYOS ♦

FOB: DAVIS RAIRDAN ♦ CDN, USA & AUS QUALIFIED ♦

M'Brook Lass 8F is visually stunning with her perfect foot structure, perfect udder structure, femininity and lots of rib as expected being an own daughter of Wiwa Creek Monarch 53'08. She was an \$11,000 high selling female from Glennie Bros. Angus and is proving herself in the production world with two top of the pen sons to her credit thus far. 8F's story has just begun and we look for her to be a headliner in our program in the coming years. Ellingson Profound is gaining popularity siring some outstanding sons and daughters with added depth, muscle shape, thickness and foot quality. The progeny from this mating will be outcross genetics, combine power and high end maternal traits assuring a quality product of either sex. We are very excited to get calves on the ground ourselves from this mating!



COWTRAX BARB WIRE 81J
SON OF M'BROOK LASS 8F



**Lot
36**

WHITESTONE LADY 8228
LAR MAN IN BLACK



SIRE OF EMBRYOS
LAR MAN IN BLACK

BAR R JET BLACK 5063

BASIN PAYWEIGHT 1682

S LAR MAN IN BLACK

D WHITESTONE LADY 8228

JMB MAXINE TG 2131

R B LADY STANDARD 305-0790

PE	BW	WW	YW	MILK	CE
EPDS	1.8	83	146	30	6.0

LOT 36 - SELLING 1 PACKAGE OF 3 EMBRYOS ♦

FOB: GENEX ♦

Very interesting mating Lynden Manor has offered in this year's sale. Whitestone Lady 8228 is a cow they purchased from the Whitestone herd and went right into the donor program. She is a Basin Payweight daughter with huge numbers across the board. Mated with the Lar Man In Black bull from ABS. He is the 4th TOP Selling bull in 2022 in the ABS Line up. Impressive individual performer with a 791 WW (125 ratio), 1,489 YW (118 ratio), 5.54 IMF (107 ratio) and 15.0 RE (113 ratio). Get on track here with new genetics that will be very sought after.

**E
M
B
R
Y
O
S**



SIRE OF EMBRYOS
EXAR STOCK FUND 9097B

**Lot
37**

LYNDEN MANOR BEAUTY 30H
EXAR STOCK FUND 9097B



DEER VALLEY GROWTH FUND

SYGDEN ENHANCE

S EXAR STOCK FUND 9097B

D LYNDEN MANOR BEAUTY 30H

EXAR EMPRESS 0875

EXAR MISS BEAUTY 2956

PE	BW	WW	YW	MILK	CE
EPDS	1.2	75	143	29	9.0

LOT 37 - SELLING 1 PACKAGE OF 3 EMBRYOS

FOB: GENEX ♦

Here is another great opportunity from Lynden Manor Farms, Beauty 30H is a daughter of his flush cow, EXAR Miss Beauty 2596 which has done an amazing job already selling numerous top end progeny across the states. The sire of this mating is another bull you can't get in Canada, EXAR Stock Fund 9097B, huge numbers across the board with great carcass data as well. These genetics can't be found anywhere in Canada.



Lot 38 RED U2 TOWNSHIP 17G

MRLA RELOAD 56CU23

RED U-2 MAMA'S BOY 167X

S RED MRLA RESOURCE 137E

D RED U-2 BEAUTY 113Z

MRLA MISS 4422B

RED U-2 BEAUTY 48X

	BW	WW	YW	MILK	CE
EPDS	4.8	48	86	20	-6.0

LOT 38A TO 38J - 10 PACKAGES OF 10 STRAWS ♦

FOB: ALTA GENETICS ♦ CDN QUALIFIED ♦

Phenotypically flawless in structure and design, Township continues to make friends and inquiries upon every tour. This breeding machine continues to gain weight through out the breeding season and now it appears the daughters, who are just about to calve, are going to seal the deal. These fleshy, big ribbed breds are the kind you want 100 of and look to be dropping that signature 113Z udder. The \$130,000 phenom is a product of the who's who's of both today's red and black angus breed making him as safe and predictable as any we have seen.



**RED U-2 BEAUTY 113Z
DAM**



S
E
M
E
N

Lot 39 RED U2 GENESIS 103G

S RED LAZY MC HUSTLE 18T
RED HOWE MAGNUM 169W
 RED HOWE MS MAT 216N

RED MINBURN COPENHAGEN 3Y
D RED U-2 LAKOTA 54B
 RED U-2 LAKOTA 318Y

	BW	WW	YW	MILK	CE
EPDS	0.3	60	110	29	5.0

LOT 39 - SELLING 1 PACKAGE OF 5 STRAWS ♦

FOB: ALTA GENETICS ♦ CDN QUALIFIED ♦

This is a bull I admired since the day I saw him, he commanded \$70,000 to Ter-Ron Farms and he has done an amazing job for them. His progeny in my travels are all at the front of the pastures. Even though there isn't much semen here, it is a very valuable commodity to flush that special cow with.



Lot 40 RED PIE QUARTERBACK 0814

RED PIE STOCKMAN 4051

SPUR FRANCHISE OF GARTON

S RED PIE QUARTERBACK 789

D RED C-BAR ABIGRACE 636D

RED PIE RUBY 520

RED C-BAR ABIGRACE Y11

	BW	WW	YW	MILK	CE
EPDS	-1.3	36	75	27	7.0

**LOT 40A TO 40D - SELLING 4 PACKAGES OF 5 STRAWS ♦
 FOB: ALTA GENETICS ♦ CDN QUALIFIED ♦**

Red PIE Quarterback 0814 was a \$50,000 sale feature out of Pieper's 2021 record setting spring bull sale. His first calves are soft made with lots of rib shape, really cool fronts and very traditional Angus heads all in a moderate framed package. We feel the Quarterback daughters are going to mature into ideal females that you'll wish you had a whole herd of. One was already crowned Intermediate Heifer Calf Champion at Farm Fair International. Adding to these new genetics, Quarterback's dam is a flush mate to the \$105,000 9 Mile Franchise at Select Sires. C-BAR Abigrace 638D was Pieper's pick of the herd flush from the well known C-BAR herd in Kansas. Take advantage of the only opportunity in 2022 to acquire these outcross genetics.



DAUGHTER



**Lot
41**

RED WILBAR CRACKERJACK 73F

RED LSF SAGA 1040Y

RED BAR-E-L DOUBLE DEUCE 198Y

S RED PIE SPECIALIST 430

D RED WILBAR SUE 51A

RED PIE PLAYMATE 232

RED WILBAR SUE 3U

	BW	WW	YW	MILK	CE
EPDS	-3.6	42	65	32	7.0

LOT 41A TO 41E - SELLING 5 PACKS OF 10 STRAWS ♦

FOB: ALTA GENETICS ♦ CDN & USA QUALIFIED ♦

CrackerJack 73F is an unmatched phenotypic standout, rarely seen in a top-ranking calving ease sire. Ranked 1% for BW, 9% for CE and top 40% for WW, with an impeccable foot structure and soundness. Backed by the proven Red Pie Specialist 430 sire and the impeccable Red Bar E-L Double Deuce maternal grand-sire, combined, have produced this true calving ease specialist. CRACKERJACK was the lead off high selling bull at Wilbar's spring 2019 sale to Yarrow Creek Ranch. His calves are born easy and grow fast. The daughters are deep bodied gems, sound and full of hair. Crackerjack is a true - smooth fronted, clean sheath, dark red angus MACHINE.



**RED PIE SPECIALIST 430
SIRE**



Lot 42 RED TR **LITTLE DEEP 285B**

S RED BIEBER ROOSEVELT W384
RED BIEBER ROLLIN DEEP Y118
 RED BIEBER TILLY 399W

D RED TR ESCALADE 318T
RED TR MISS PATHY 1170Y
 TR MISS PATHY 544U

	BW	WW	YW	MILK	CE
EPDS	3.2	49	93	29	-2.0

LOT 42A TO 42E - SELLING 5 PACKS OF 10 STRAWS ♦

FOB: RSL RED ANGUS ♦ CDN QUALIFIED ♦

The high selling Lot in the KBJ Round Dispersal sale to RSL Red Angus. Little Deep 285B has changed his program immediately adding more shape, and size to his bull pen. Very consistent progeny with extra bone and dark red hides.



**RED TR MISS PATHY 1170Y
 DAM**



Lot 43 RED WRIGHTS COMBINATION 34G

RED SVR KNIGHT 236T

RED LAZY MC LOOKOUT 153X

S RED SSS SOLDIER 365W

D RED LAZY MC FIREFLY 36Z

RED SSS BELLE 342S

RED LAZY MC MISS FIREFLY 31S

	BW	WW	YW	MILK	CE
EPDS	-0.4	34	58	25	7.0

SELLING 1 PACKAGE OF 40 STRAWS ♦

FOB: BOW VALLEY ♦ CDN QUALIFIED ♦

The first time I saw Red Wright Combination 34G at the 2021 Sask Angus Tour, I knew this bull had a large future in him. Dark Cherry red, large black footed with loads of muscle and great disposition. He travelled so easily in the pens at Jim's place. Moose Creek Red Angus purchased the walking rights to him. His pedigree is backed up by the Firefly 36Z cow, the Donor Dam for Lazy MC Angus. She has raised a lot of herdbulls for Clint. Red SSS Soldier 365W is also a bull that has been a top end producer for many years now. Combination 34G was crowned Supreme Champion Bull at Lloyd Stockade 2021, what an accomplishment that was!!! He has gathered a lot of admirers this show season and now this is your only opportunity to obtain his genetics this year. This semen was very sought after last year. This year we are selling just a large pack on Combination.



**RED LAZY MC FIREFLY 36Z
DAM**



**RED SSS SOLDIER 365W
SIRE**



Lot 44 **RED DWAJO JES JETHRO 76J**

S RED TER-RON BAZINGA 13B
RED GOAD HIGH ROLLER 142'17
 RED CINDER MISS TOKUN 9X

RED T-K RECOIL 72Y
D RED DWAJO LUCY 104C
 RED DWAJO LUCY 21T

	BW	WW	YW	MILK	CE
EPDS	0.2	42	66	24	1.0

44A TO 44C - SELLING 3 PACKAGES OF 10 STRAWS ♦

FOB: REDRICH FARMS ♦ CDN QUALIFIED ♦

Red Dwajo Jes Jethro 76J was the \$30,000 top selling bull to Redrich Farms & RSL Red Angus. That day he was wanted by a lot of top end breeders across the prairies. He is a bull with a great hair coat and travels out so well. Bred very well for us this past spring. His dam, DJE 104C is a donor cow for Dwajo and she was the selling point on this bull. One of the best bulls in 2022 to sell in the Red Angus breed. Great opportunity to get some new and fresh genetics.



RED DWAJO LUCY 104C

S
E
M
E
N



Lot 45 **RED DWAJO** **MACK 4F**

RED SSS POKER FACE 136Y

RED TGA CR SAKE 6005S

S RED TOPHAM PETERBILT 415B

D DWAJO LADY 67Y

RED TOPHAM MS BEULAH 845U

HIPS LADY 68U

	BW	WW	YW	MILK	CE
EPDS	-2.2	28	48	25	10.0

LOT 45A TO 45E - SELLING 5 PACKS OF 10 STRAWS ♦

FOB: BOW VALLEY GENETICS ♦

A deep cherry red proven calving ease specialist, Red Dwajo Mack 4F has excelled in multiple positive attributes he passes along to his progeny. They inherit that attractive deep pigmentation, fantastic foot structure, extreme length, tidy fronts and plenty of rib shape coupled with character, muscle expression and performance. His first daughters are exemplary females with well attached well formed udders. Sons have been well accepted and sought by both seedstock producers and commercial cattlemen attracting plenty of attention in the bull pen. An interesting pedigree and genetics from his black hided dam and productive sire, both produced some high selling lots for the good folks at Dwajo. Mack 4F is an all around sire, covering all the bases for calving ease, eye appeal, maternal power and very marketable progeny.



Lot 46 **RED MANN RED BOX 55C**

RED UBAR HIGH CAPACITY 224

RED 5L NORSEMAN KING 2291

S RED SLGN WIDELoad 920W

D RED PELTON MISS AJA 0839U

RED MEADO-WEST PERSUA-

RED PELTONS MISS IDA 0547R

	BW	WW	YW	MILK	CE
EPDS	3.2	51	94	22	-2.0

LOT 46A TO 46C - SELLING 3 PACKS OF 5 STRAWS ♦

FOB: DRI - SUNBERRY, FOB: ALTA GENETICS - OBI ♦

Red Mann Red Box 55C adds sure mass, bone, hind quarter to his progeny. We have all seen many progeny this fall on the show road with Many banners being won. Reserve Champion Red Angus Bull at Agribition 2021 for Double B Angus. The offering at the Blair's Sale is very strong as well. Many top end females have sold this fall. Unfortunately, Red Box 55C passed away late year so there is very limited semen as you will found out.

S
E
M
E
N



Lot 47 RED DUFF RED BEAR 18154

RED SLGN WIDELOAD 920W

RED STEWART PANTHER 19X

S RED MANN RED BOX 55C

D RED CC PANTERA 20A

RED PELTON MISS AJA 0839U

RED CCY SAVANNAH 5U

	BW	WW	YW	MILK	CE
EPDS	1.8	47	82	22	0.0

**LOT 47A TO 47F - SELLING 6 PACKS OF 5 STRAWS ♦
FOB: ALTA GENETICS ♦**

Red Duff Red Bear 18154 is a bull I sourced this January and obtained a lot of semen after investigating more about him and visiting with the Fischer's from Trademark Genetics down in Texas. Red Bear 18154 was the \$80,000 Bull sold in the Power Plus 2020 Bull Sale to Trademark Genetics. He displays the same power, quality, impressive balance, body shape, and is super attractive through his front end! This bull will continue to attract interest and the folks that have used him will have some very marketable progeny. The progeny I have seen this year on the ground made myself go get more semen from Mandy Fischer and family.



RED DUFF RED BEAR 18154

ARNTZEN ANGUS



LOT 48A TO 48C - SELLING 3 PACKS OF 10 STRAWS ♦

FOB: ALTA GENETICS ♦

CDN QUALIFIED ♦

Calving ease specialist with exceptional maternal with his dam being the \$35,000 Anexa cow. Super dark red with an impeccable structure will add more then just calving ease.

Lot 48 **RED U2Q CONVOY 435J**

RED HOWE HESSTON 212C

S RED U2 DOMINION

RED U2 HIDEE HO 459D

RED MINBURN COPENHAGEN 3Y

D RED U-2 ANEXA 439A

RED U-2 ANEXA 443Y

	BW	WW	YW	MILK	CE
EPDS	2.8	42	86	32	-1.5

TRIPLE L LIVESTOCK



LOT 49A TO 49B - SELLING 2 PACKS OF 5 STRAWS ♦

FOB: TRIPLE L LIVESTOCK ♦

CDN QUALIFIED ♦

Red Soo Line Power Eye 161X continues to raise top end progeny across the land. One of those bulls that people are realizing the value of having females sired by him. Steen Angus & McGowan farms showed a very good pair out of Power Eye this fall. Red Cinder Freyja 29E, the now donor dam for Brylor and Cinder Angus is another daughter that has done amazing things as well.

Lot 49 **RED SOO LINE POWER EYE 161X**

RED BAR-E-L RIBEYE 103R

S RED COCKBURN RIBEYE 308U

RED WILBAR CORA 443P

RED GEIS KNIGHT HAWK 14'02

D RED TR LYNN 301R

TR LYNN 105L

	BW	WW	YW	MILK	CE
EPDS	-0.4	46	78	17	7.0

HR HAHN CATTLE CO.



Lot 50 **RED SSS SOLDIER 365W**

- RED SVR KNIGHT 73P
- S RED SVR KNIGHT 236T**
RED SOUTH VIEW MISS MAXI 45H
RED CROWFOOT OLE'S OSCAR 2042M
- D RED SSS BELLE 342S**
RED SSS BELLE 612P

	BW	WW	YW	MILK	CE
EPDS	2.3	40	67	24	-1.0

**LOT 50 -
SELLING 1 PACKAGE OF 5 STRAWS ♦
FOB: HR HAHN CATTLE CO. ♦**

HR HAHN CATTLE CO.



Lot 51 **RED COCKBURN RIBEYE 308U**

- RED TER-RON DIGGER 11L
- S RED BAR-E-L RIBEYE 103R**
RED BAR-E-L MARCIE 50N
RED TER-RON TORNADO 157M
- D RED WILBAR CORA 443P**
RED HEAD CORA 159L

	BW	WW	YW	MILK	CE
EPDS	4.2	50	83	31	-1.0

**LOT 51 -
SELLING 1 PACKAGE OF 8 STRAWS ♦
FOB: HR HAHN CATTLE CO. ♦**

HR HAHN CATTLE CO.



Lot 52 **RED GEIS POUND MAKER 22'96**

- RED LEACHMAN HEAVENLY 8141
- S RED GARA HEAVENLY 65C**
RED MARTA 46U OF EAST FORK
RED SIX MILE CHIEF 784T
- D RED CUMNOCK MINERVA 954Y**
RED CUMNOCK MINERVA 139S

	BW	WW	YW	MILK	CE
EPDS	3.9	22	50	32	-9.0

**LOT 52 - 1 PACKAGE OF 10 STRAWS ♦
FOB: HR HAHN CATTLE CO. ♦**

**S
E
M
E
N**

HR HAHN CATTLE CO.



Lot 53 **RED 5L NORSEMAN KING 2291**

RED VGW ACE 613

S RED VGW KING OF THE WEST
RED VGW MT TABITHA 9633

376 P J M 141

D RED NORSEMAN 1312 PJM
P J M POWERPOINT 2009

	BW	WW	YW	MILK	CE
EPDS	1.6	32	60	25	5.0

**LOT 53 -
SELLING 1 PACKAGE OF 10 STRAWS ♦
FOB: HR HAHN CATTLE CO. ♦**

HR HAHN CATTLE CO.

Lot 54 **RED LAZY MC HUSTLE 18T**

RED CRCC BOOM 100N

S LAZY MC BOOM 44R
LAZY MC CRISTY 44L

RED LAZY MC SMASH 41N

D RED LAZY MC LARKABA 70R
RED LAZY MC LARKABA 60N

	BW	WW	YW	MILK	CE
EPDS	3.6	54	100	39	-7.0

**LOT 54 -
SELLING 1 PACKAGE OF 5 STRAWS ♦
FOB: HR HAHN CATTLE CO. ♦**

HR HAHN CATTLE CO.



Lot 55 **RED BIEBER DSIGN 1325-082**

SOR DYNAMO 327-027

S SCHULER DYN 027-082
SOR ROSE 605-010

RAB NATION E410-236

D RED RAB INDIGO 1073-982
RAB INDIGO 701-702

	BW	WW	YW	MILK	CE
EPDS	0.8	20	23	18	-3.0

**LOT 55 -
SELLING 1 PACKAGE OF 5 STRAWS ♦
FOB: HR HAHN CATTLE CO. ♦**

**S
E
M
E
N**

OBI LIVESTOCK LTD.



Lot 56 **RED KBJ SAM'S PROSPECTOR 133Z**

K C SHOGUN K22 80
S TLA NORTHERN SAMURAI
 DINTER PRIDE OF TERRLENE 13P
 KBJ ROUND MR ANGUS 2P
D KBJ ROUND LASSIE 18T
 EARLY SUNSET LASSIE 29N

	BW	WW	YW	MILK	CE
EPDS	0.2	19	37	19	4.0

**LOT 56A TO 56E -
 SELLING 5 PACKS OF 10 STRAWS ♦
 FOB: ALTA GENETICS ♦**

SUNBERRY VALLEY RANCH



Lot 57 **RED FINE LINE MULBERRY 26P**

RED HR RAMBO ET 91K
S RED COMPASS MULBERRY 449M
 RED BRYLOR MISS ROC 20H
 RED SILVEIRAS REDFORD
D RED DUS FAYETTE 8G
 RED MC DOUGALL FAYETTE 59A

	BW	WW	YW	MILK	CE
EPDS	2.2	52	93	25	5.0

**LOT 57A TO 57B -
 SELLING 2 PACKS OF 10 STRAWS ♦
 FOB: ALTA GENETICS, NZL QUALIFIED ♦**

SUNBERRY VALLEY RANCH



Lot 58 **RED BRYLOR KODIAK 3A**

HF KODIAK 5R
S BLACK BRYLOR KODIAK 204Y
 RED XXX LAKME 70M
 RED BRYLOR SDL PASQUALE 213P
D RED BRYLOR FAYETTE 40Y
 RED FL FAYETTE 33M

	BW	WW	YW	MILK	CE
EPDS	-1.9	54	70	22	14.0

**LOT 58A TO 58B -
 SELLING 2 PACKS OF 10 STRAWS ♦
 FOB: ALTA GENETICS, AUS QUALIFIED ♦**

**S
E
M
E
N**

WILBAR CATTLE CO.



Lot 59 **RED BRYLOR NEW TREND 22D**

- V D A R NEW TREND 315
S SSS BLACK TREND 13B
 RED SSS MISS DYNAMO 3W
 RED SEAMAN CHIEF 47Y
D RED MEADOW CK MISS SEAMAN 31A
 RED MEADOW CK PRINCESS 10W

	BW	WW	YW	MILK	CE
EPDS	4.0	34	70	37	-8.0

**LOT 59 -
 SELLING 1 PACKAGE OF 2 STRAWS ♦
 FOB: BOW VALLEY GENETICS ♦**

WILBAR CATTLE CO.



Lot 60 **RED BRYLOR SDL PASQUALE 213P**

- RED BJR RAMBLER 5162
S RED VGW RAMBLER 1000
 RED VGW UMPIRE YUMA 9266
 RED BRYLOR NEW TREND 22D
D RED XXX LAKME 70M
 RED FINE LINE LAKME 21J

	BW	WW	YW	MILK	CE
EPDS	-4.6	30	52	27	19.0

**LOT 60 -
 SELLING 1 PACKAGE OF 4 STRAWS ♦
 FOB: BOW VALLEY GENETICS ♦**

WILBAR CATTLE CO.



Lot 61 **RED SIX MILE SIGNATURE 295B**

- RED VGW GAME PLAN 816
S RED SIX MILE GRAND SLAM 130Z
 RED SIX MILE REBECCA 216X
 RED SIX MILE UNLEASHED 595U
D RED SELMA OF SIX MILE 358X
 RED RSL MISS SELMA 384F

	BW	WW	YW	MILK	CE
EPDS	3.7	45	76	17	-4.0

**LOT 61 -
 SELLING 1 PACKAGE OF 3 STRAWS ♦
 FOB: BOW VALLEY GENETICS ♦**

**S
E
M
E
N**

WILBAR CATTLE CO.



Lot 62 RED LAZY MC SMASH 41N

- RED FCC RAMBO 502
- S RED SSS BOOMER 803B**
RED SSS MISS HIGH LASS 352X
RED BRYLOR YOUNGBLOOD 22Y
- D RED LAURON YB ROSA 11G**
RED ALALTA ACRES ROSALINDA 25Y

	BW	WW	YW	MILK	CE
EPDS	-0.1	28	52	36	4.0

LOT 62 -
SELLING 1 PACKAGE OF 3 STRAWS ♦
FOB: BOW VALLEY GENETICS ♦

WILBAR CATTLE CO.



Lot 63 RED PIE GAME ON 9109

- RED LCC IMF B054M
- S RED VGW GAME PLAN 508**
RED VGW PT - DORY 0361
RED PIE PACIFIC 3173
- D RED TPIE CASCADE 561**
RED RCRA CASCADE 4M

	BW	WW	YW	MILK	CE
EPDS	4.5	41	80	12	-5.0

LOT 63A TO 63B -
SELLING 1 PACKAGE OF 6 STRAWS ♦
SELLING 1 PACKAGE OF 7 STRAWS ♦
FOB: BOW VALLEY GENETICS ♦

WILBAR CATTLE CO.



Lot 64 RED LAZY MC COWBOY CUT 26U

- RED LAZY MC SMASH 41N
- S RED LAZY MC STOUT 30S**
RED LAZY MC SCYTHIA 78N
LAZY MC WORLDWIDE 5K
- D RED LAZY MC STAR 185M**
RED LAZY MC STAR 100J

	BW	WW	YW	MILK	CE
EPDS	4.1	48	86	10	-4.0

LOT 64 -
SELLING 1 PACKAGE OF 10 STRAWS ♦
FOB: BOW VALLEY GENETICS ♦

S
E
M
E
N

BRYLOR RANCH



Lot 65 RED BIEBER **ROOSEVELT W384**

- RED BASIN TRENDSETTER 6074
- S RED BIEBER ROUGH RIDER 10712**
RED BIEBER ADELLE 8958
- C A FUTURE DIRECTION 5321
- D RED BIEBER SHEBA 9602**
RED BIEBER SHEBA 5537

	BW	WW	YW	MILK	CE
EPDS	2.4	34	55	33	2.0

**LOT 65 -
SELLING 1 PACKAGE OF 10 STRAWS ♦
FOB: ALTA GENETICS ♦**

BRYLOR RANCH



Lot 66 RED BIEBER **ROUGH RIDER 10712**

- RED BRYLOR NEW TREND 22D
- S RED BASIN TRENDSETTER 6074**
RED BASIN ROSE F521
- RED BIEBER TITAN 6894
- D RED BIEBER ADELLE 8958**
RED BIEBER ADELLE 7226

	BW	WW	YW	MILK	CE
EPDS	1.4	39	58	21	5.0

**LOT 66 -
SELLING 1 PACKAGE OF 10 STRAWS ♦
FOB: ALTA GENETICS ♦**

BRYLOR RANCH



OUT OF SALE

Lot 67 RED SSS **STAUNCH 84Y**

- RED CROWFOOT OLE'S OSCAR 2042M
- S RED SSS OLY 554T**
RED SSS GOLD EDGE 77R
- RED FABULOUS GRAND PRIX 6R
- D RED SSS SCAARA 429W**
RED SSS SCAARA 9R

	BW	WW	YW	MILK	CE
EPDS	-0.7	47	87	33	3.0

**LOT 67 -
SELLING 1 PACKAGE OF 10 STRAWS ♦
FOB: ALTA GENETICS ♦**

**S
E
M
E
N**

GOAD FAMILY ANGUS



EMBRYOS

Lot 68

RED U-2 ANEXA 226C
 RED SSS SOLDIER 365W



SIRE OF EMBRYOS
 RED SSS SOLDIER 365W

RED SVR KNIGHT 236T

RED U-2 AUTHENTIC 139A

S RED SSS SOLDIER 365W

D RED U-2 ANEXA 226C

RED SSS BELLE 342S

RED U-2 ANEXA 21Y

PE	BW	WW	YW	MILK	CE
EPDS	2.4	39	67	20	-0.5

LOT 68 - SELLING 1 PACKAGE OF 3 EMBRYOS ♦

FOB: SUNDOWN LIVESTOCK TRANSPLANTS ♦ QUALIFIED FOR CANADA & USA

Anexa 226C was a highlight lot of the U2 dispersal to Kenray Ranch. When Kenray dispersed their mature cows last fall, we knew that 226C was one that we wanted to try and own to add the Anexa cow family into our herd to start a new cow family. She has been in embryo production all year and we can't wait to get some of her progeny into our own herd.

226C is the grand dam of the Red MRLA Respect 42G bull that is making his mark as a young sire on the red angus bred.

The mating to Red SSS Soldier 365W should be a fun one to watch for as he keeps siring cattle that after almost 14 years are still in demand and semen is getting to be limited.



SIRE OF EMBRYOS
RED U2 GENESIS 103G

**Lot
69**

RED T-K RINA 87X
RED U2 GENESIS 103G



RED HOWE MAGNUM 169W

RED SSS ARSON 6U

S RED U2 GENESIS 103G

D RED T-K RINA 87X

RED U-2 LAKOTA 54B

RED JRA RINA 8T

PE	BW	WW	YW	MILK	CE
EPDS	-0.2	45	79	31	5.5



SON
RED T-K COBRA 34B

LOT 69A TO 69B -

SELLING 2 PACKAGES OF 3 EMBRYOS ♦

FOB: BOW VALLEY ♦ QUALIFIED FOR CANADA, USA, AUS ♦

Very exciting opportunity here with this mating of two exceptional individuals. First off Rina 87X is a model beef cow. Tremendous length, solid bone, hits the ground square on all four feet, broody and easy doing producer with many high sellers to her credit as well as some good producing daughters. Sons and grandsons have worked in numerous purebred and top commercial herds. Always sale features. Look for calves out of Rina at Leeuwenburgh's, U2Q and Hawkeye in the future as well. Rina also has the ability to lower birth so this cross should produce some excellent low birth lines. The sire Genesis needs no introduction as his calves have been highly sought after wherever they are available, and for good reason. Good stout eye appealing cattle that start off moderate and have explosive growth. Top that off with the power of his dam and he is no miss. This mating is loaded with top cattle so the results will be outstanding.

**E
M
B
R
Y
O
S**

B-ELLE RED ANGUS



**SIRE OF EMBRYOS
RED DUFF RED BLOOD 18114**

Lot 70 **RED B-ELLE MERIT UTOPIA 811U** 
RED DUFF RED BLOOD 18114

RED ROJAS RIOJA 6052

RED FINE LINE MULBERRY 26P

S RED DUFF RED BLOOD 18114

D RED B-ELLE MERIT UTOPIA 811U

DUFF JUANADA 927K 15124

RED BL FINISH MERIT 219M

PE	BW	WW	YW	MILK	CE
EPDS	-1.0	31	45	25	9.5

LOT 70 - SELLING 1 PACKAGE OF 3 EMBRYOS ♦

FOB: DAVIS RAIRDAN ♦

Nearly 15 years young, Red B-Elle Merit Utopia 811U is an unstoppable quality producing machine. Deep, wide and thick, fantastic structured udder that lasts. Utopia 811U is the perfect complimentary piece to Red Blood adding her bone substance to his dark color and eye appeal. The two flush daughters we weaned this fall are knock out heifers, carrying excellent skeletal size and performance with beautiful, feminine, front ends. Take a sample of some of the top genetics in our herd.



E
M
B
R
Y
O
S

**Lot
71**

RED TRIPLE L CHETA 2C
RED RREDS SENECA 731C



SIRE OF EMBRYOS
RED RREDS SENECA 731C

RED BIEBER ROLLIN DEEP 118

RED MRLA NEW ERA 87Y

S RED RREDS SENECA 731C

D RED TRIPLE L CHETA 2C

RED RREDS ASTER 309A

RED SIX MILE CHETA 702W

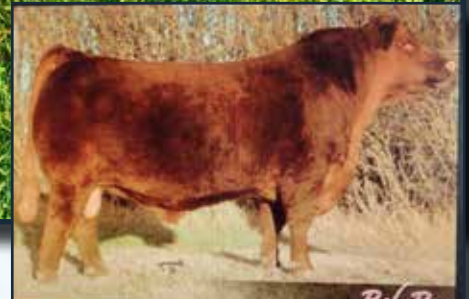
PE	BW	WW	YW	MILK	CE
EPDS	1.4	54	90	26	3.0

LOT 71 - SELLING 1 PACKAGE OF 4 EMBRYOS ♦

FOB: PEAK IN MOOSE JAW ♦ CDN QUALIFIED ♦

Red Triple L Cheta 2C has everything we desire in our red cows. Good feet, dark red, lots of power and great udder. Former Denver Reserve Champion Bull, Red MRLA New Era and Red Six Mile Cheta progeny have knocked it out of the park.

Mated this year with Red RREDS Seneca 731C for a new twist on paper. He is the very popular son of Rollin Deep Y118. Seneca 731C has produced many top end progeny across the land so far.



SIRE OF EMBRYOS
RED NORTHLINE ROB ROY 122K

**Lot
72**

PATCHELL HALO
RED NORTHLINE ROB ROY 122K



RED WILD ROSE ROBIN HOOD 11F

RED SIX MILE SIGNATURE 295B

S RED NORTHLINE ROB ROY 122K

D PATCHELL HALO

RED BAR EL SYBIL 122E

WERNER BLACK ANGEL 1299

PE	BW	WW	YW	MILK	CE
EPDS	2.5	38	76	32	3.5

LOT 72 - SELLING 1 PACKAGE OF 3 EMBRYOS ♦

FOB: HEARTLAND VETERINARY SERVICES ♦

CDN, USA QUALIFIED

Here is an opportunity to get in on the ground floor with this amazing mating. Patchell Halo is a black-red carrier direct daughter of the infamous Werner Black Angel 1299. Halo like her dam is making her mark in the Angus industry. She combines maternal function and immense production capabilities with an impeccable phenotype, udder quality and unmatched muscle and fleshing ability. Her first calf was a red bull that was selected as a calf by Tjepkema Family Farm to breed his Red Angus cows. Her Reckoning heifer calf remains in our heifer pen. Halo's progeny are the first visitors seem to find and she herself is very fertile catching to her first service every year. She gave us 26 #1 Embryos on March 31 and bred back on April 12 and safe in calf. We implanted 3 of these embryos and got 3 pregnancies. This is a momma that just doesn't miss. The picture that is attached is a Full Sib to the Halo X Rob Roy embryos.



FULL SIB TO THE EMBRYOS



RED PATCHELL JERSHIKA - FULL SIB TO THE EMBRYOS

Lot 73

PATCHELL NEON MOON 5F **X**
RED NCJ COMING IN HOT 24E

RRA AVIATOR 507

RED SIX MILE SIGNATURE 295B

S RED NCJ COMING IN HOT 24E

D PATCHELL NEON MOON 5F

RED NCJ MINERVA 35C

WERNER BLACK ANGEL 1299

PE	BW	WW	YW	MILK	CE
EPDS	1.8	51	92	23	3.0

LOT 73 - SELLING 1 PACKAGE OF 3 EMBRYOS ♦
FOB: HEARTLAND VETERINARY SERVICES ♦
CDN, USA QUALIFIED ♦

Coming In Hot 24E needs no introduction to the Angus breed, his progeny says it all for him. Patchell Neon Moon has had 3 consecutive Red calves, the first 2 being bulls and the above pictured Red Patchell Jershika 5K. Those bull calves were the first taking from the bull pens for calving ease and heavy weaning and yearling weights. Once Jershika 5K came along, we knew we had to flush Neon Moon. Neon Moon is a big framed cow with a beautiful udder with the ability to wean heavy calves with extra eye appeal. 5K weaned off at 780 lbs and has a great disposition. 5K a full sibling to the embryos has had a very good show career; Calf Champion at Tara Fair, Reserve Grand Champion at Paisley Fair & Hanover Fair, Heifer Calf Champion at Brampton Provincial Gold Show and Reserve Heifer Calf Champion at Rockton World Fair. (All shown in a mixed show with Red & Black Angus)



SIRE OF EMBRYOS
RED NCJ COMING IN HOT 24E



Timed Auctions Made Easy

HOW TO PARTICIPATE IN THE DLMS FARM GATE TIMED AUCTION WITH EXTENDED BIDDING:

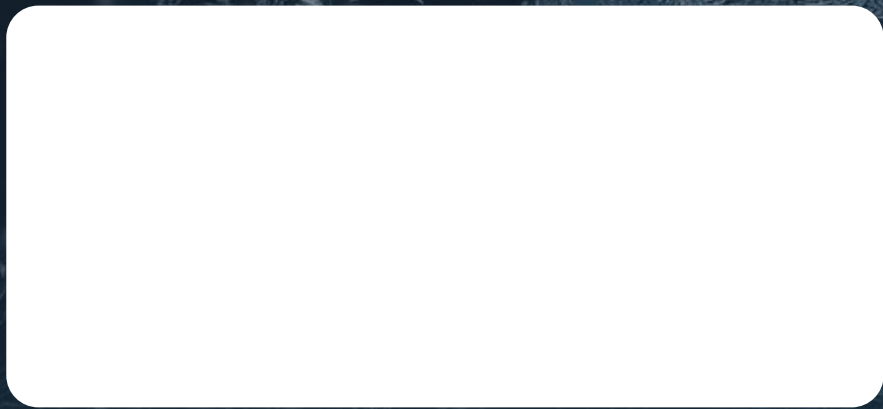
1. Visit dlms.ca and follow the link to the DLMS FarmGate timed auction site www.farmgatetimeductions.ca, click the LOGIN/REGISTRATION button. First time users will select the REGISTER button from this page. Fill out the registration form to sign up for a free user account and it allows you to select a username and password for use on all Farm Gate Timed auctions. This program will send you text and email messages whenever there is activity on your favorite lots or someone challenges your proxy bid and this is why you will be asked for both your current email and cell phone number.
2. You can choose your favourite lots in this sale at this time and the program will allow you to open either all sale lots or just your favorite lots on your screen. Any time there is active bidding on a lot you have identified on your favorite list you will get a text and/or an email noting this activity.
3. The program allows you to place a proxy bid on any sale lot. This in fact protects your interest in any lot of interest for you to a specified dollar value you set, when you may not be able to give 100% attention to the sale. If the lot has a \$2000 bid on it and you place a proxy bid of \$3500 into the system, the computer will bid \$2100 for you but if some one else bids \$2200, the computer will again bid for you, this time at \$2300. The system will look after your interest to a maximum of \$3500. If another bidder is on at \$3600, your proxy will no longer be effective and you will no longer have the winning bid on this lot without once again logging in and bidding again or moving your attention to a second lot of interest.
4. At closing time of the sale the entire sale will extend bidding if a bid is placed on any lot in the sale. Any bid received after close time will extend the sale by the time listed on each sale. In Most cases the time gets shorter the longer in to extended bidding the sale is. When no bidding occurs for the extended time the computer will declare the sale finished.
5. Following the sale the Owner or Sale Manager will invoice all buyers in the sale, please contact the seller with questions or to arrange delivery, pick up or shipping of your purchases.



OBI LIVESTOCK LTD.
28 GLENDALE BLVD
RED DEER, AB
T4P 2P3

CANADA		POSTES
POST		CANADA
	Postage paid	Port payé
	Personalized Mail	Courrier personnalisé
8343874		

RETURN POSTAGE GUARANTEED
PORT DE RETOUR GARANTI



2nd ANNUAL
FROZEN
GENETICS
on

ICE

CREATED BY:

